

SCLP SERIES

COMMERCIAL INDOOR LIGHTING

WESTGATE
THE FUTURE IS HERE...AND IT'S QUITE BRIGHT!

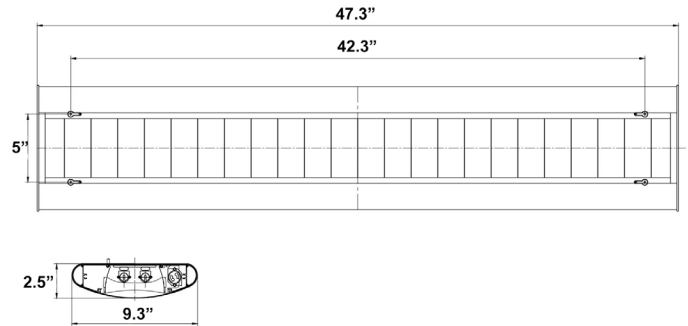
SCLP-4FT-50W-MCTP-D
SCLP-4FT-50W-MCTP-D-BK

LED PARABOLIC SUSPENDED DOWN LIGHT

MCTP Multi Color Temperature (Selectable)



Customer Name: _____
Project Name: _____
Note: _____ | Type: _____



5" H x 2 1/2" D x 47.3" W

Ideal for Storage rooms, Offices Conference rooms, Retail Reception areas, Hallways Education facilities

Features

- Lens: Parabolic Reflector Lens
- Housing: Anodized Aluminum
- 5-Year Warranty
- Rated Life: 50,000 Hrs

Technical Specifications

Electrical:

- Voltage: 120-277V AC 60Hz
- Wattage: 30W/40W/50W
- Power Factor: >0.95
- Efficacy: 115 LPW
- THD: <20%

Mechanical:

- Housing: Anodized Aluminum
- Polycarbonate End Caps
- Ambient Temperature: -22°F to +104°F
- 5-year Warranty

Lighting:

- MCT: Multi Color Temperature (Selectable with Switch Inside Fixture)
- Lens: Parabolic Reflector Lens
- High Quality LED Chips provide High Efficiency, Heat Dissipation, Stability, and Lumen Maintenance
- Dimmable: 0~10V Dimmable
- Lumens Range: 6900LM
- Color Temperatures: 3500K/4000K/5000K
- Color Rendering Index: CRI ≥ 80
- Rated Life: 50,000 Hrs

Applications:

- Storage rooms
- Offices
- Conference rooms
- Retail
- Reception Areas
- Hallways
- Education Facilities

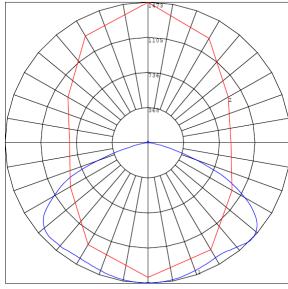
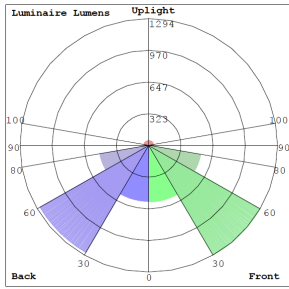


Phone: (877) 805-2252 | Fax: (877) 805-2252
www.westgatemfg.com

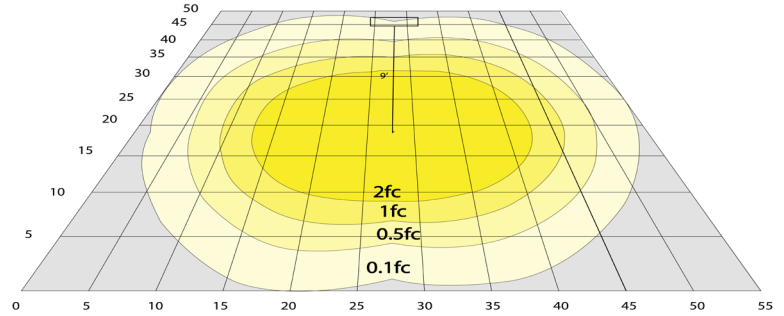


WG-ZA-Z7-2Z

Photometrics: SCLP-4FT-50W-MCTP-D



BUG Rating: B2-U2-G1

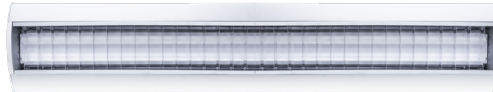


Area 50'x 55' Mounting Height: 9'

Other Views:



Side View



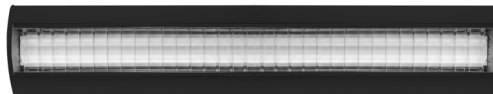
Lens View



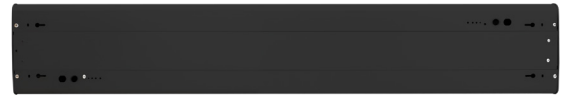
Back View



Side View



Lens View



Back View

Performance Table: SCLP-4FT-50W-MCTP-D

MODEL NO.	Wattage	Voltage	Lumens	Color Temp.	BUG Rating	LPW
SCLP-4FT-50W-MCTP-D	35W	120~277V	4025LM	3500K	B2-U2-G1	115
SCLP-4FT-50W-MCTP-D-BK	40W		4600LM	4000K		
	50W		6900LM	5000K		

Sample Ordering

- - - - -

Blank = White
BK = Black

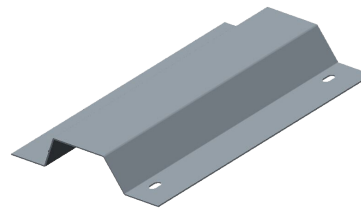
Accessory:

Blank = No Option For Accessories
SCLP-CB = COUPLING BRACKET

Factory-Installed Options:

Blank = No Option For Accessories
OPT-EM-AC2EXT = EMERGENCY BACKUP INTERNAL BATTERY
OPT-SLCP-ULK = UP LIGHT 20W, MCT
OPT-SLCP-SURF = SURFACE-MOUNT

ACCESSORY:



SCLP-CB

FACTORY-INSTALLED OPTIONS:



OPT-EM-AC2EXT

